

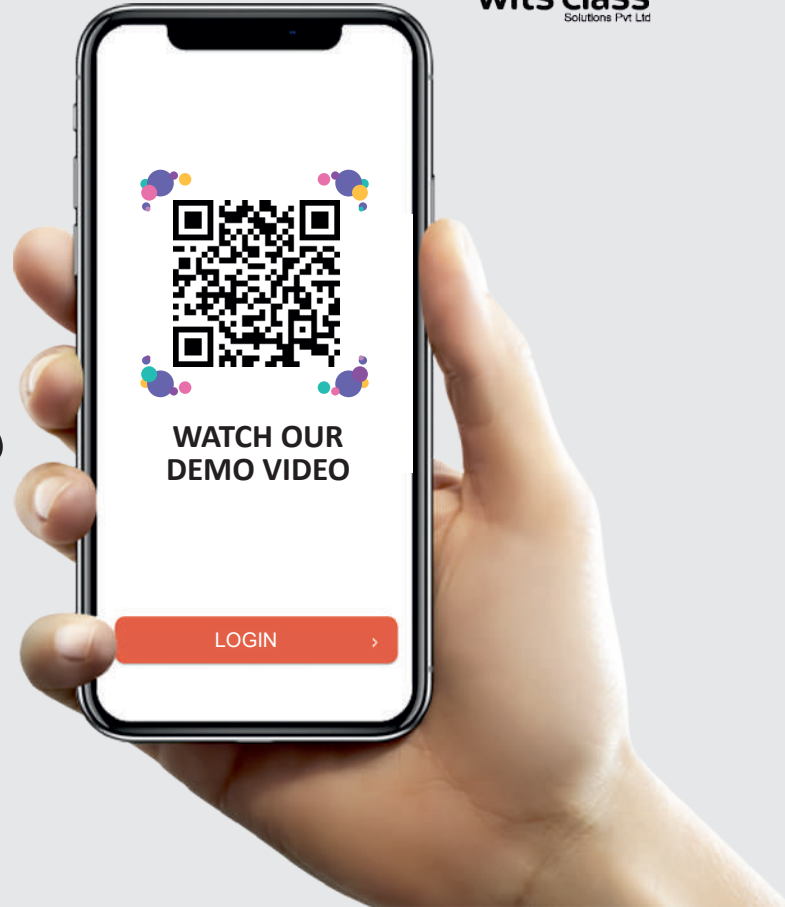
#No.1 LMS Application in India  
#Trusted by 1000+ Institutions



# WITS CLASS

Learning Management Solution

Android + iOS + Web App



WelkinWits<sup>LLP</sup>  
Technologies

Celebrating 10  
Years



## WHO WE ARE

At Welkinwits technologies, we provide the best IT solutions in the market. We customize android, iOS, web applications according to our client's requirements. We also provide digital marketing solutions for customers who need it. Wits Classroom is one of our best products that can be customized according to the client's requirements and needs. It's a simple and convenient application that can be used by those in the educational field. This application is widely used by educational institutions, tuition centre's, training academy and different kinds of coaching centre's. We offer four levels of service for our products. Basic, Standard, Premium Advanced and Enterprise Level. Some of our peculiarities are, we cater to our customer's specific needs by customizing our products to match their requirements. We have versions of our applications available for iOS, Android and Web app. Our experts will provide you with all the training and demonstrations you need to get started with our application. Our products are designed with the user in mind and are easy to understand.



# ■ WHY TO CHOOSE ■ WITS CLASS?



YOUR OWN  
DESIGN



60+ MODULES  
AVAILABLE



CUSTOMIZATION  
AVAILABLE



USER  
FRIENDLY



EXPERIENCED  
TEAM



ADVANCED  
TECHNOLOGIES



TRUSTWORTHY &  
ASSURED SECURITY



AFFORDABLE  
PRICE



24/7 CUSTOMER  
SUPPORT

# PHASES OF WITS CLASS DEVELOPMENT PROCESS

## PLANNING



Project Planning  
Client Approval

## UI/UX DESIGN



UI/UX design  
Analyzing Designs  
Client Approval

## DEVELOPMENT



Coding  
Testing  
Bug Fixing  
Client Review

## STORE LISTING



Cloud server  
Android store  
iOS store

## SUPPORT



Maintenance  
Enhancements  
Backup support  
Work support

# WITS CLASS SUCCESSFULLY IMPLEMENTED IN VARIOUS EDUCATION SEGMENTS



- ◆ Schools and Colleges
- ◆ Tuition Centre's
- ◆ Entrance Coaching Centre's
- ◆ Distance Education Centre's
- ◆ Online Training Centre's
- ◆ Language Training Academy
- ◆ Business Coaching Centre's
- ◆ Spoken English Centre's
- ◆ IELTS Coaching Centre's
- ◆ German Language Training Centre's

- ◆ Video Course Program
- ◆ Online Bible Academy
- ◆ Online Jyothisham Academy
- ◆ Online Consultancy
- ◆ Yoga Training Centre's
- ◆ Gym Fitness Online
- ◆ Aviation Academy
- ◆ PSC, SSC Coaching Centre's
- ◆ Bank Coaching Centre's
- ◆ Teachers Training Centre's

- ◆ CA/CMA Coaching Centre's
- ◆ Arabic Language Training Centre's
- ◆ Online Business Consultancy
- ◆ Motivation Speaking Centre's
- ◆ Individual Course Centre's
- ◆ Online Madrasa
- ◆ Study Abroad
- ◆ Fire and Safety Academy
- ◆ Digital Marketing Institution
- ◆ Website and Mobile App Training Centre's

# BASIC LEVEL



## ADMISSION SYSTEM

Allows to easily collect and manage student information like your name, academic level and mobile number. It encompasses various components, in backend administrative sides, to facilitate a seamless and efficient admission process.



## MOBILE OTP LOGIN SYSTEM

The app we are using incorporates a mobile OTP system in order to keep all data secure and accessible as needed. This system also offers the feature of attendance tracking for students.



## LIVE CLASS

We provide live classes using third-party apps like Zoom/Google Meet, so you can keep learning no matter where you are.



## RECORDED CLASSROOM

All classes are recorded so students can watch them at their convenience and avoid repeating finished classes.



## STUDY MATERIALS DOWNLOADS

Students can download all the needed study materials, like notes and PDF's of a subject, for their respective classes. This way, everyone has access to the same resources and can stay on top of their studies.



## QUIZ MODULE

A quiz module is a valuable feature that allows users to participate in quizzes or assessments to test their knowledge and enhance their learning experience. We provide quiz session in an multiple choice and timer for each quiz to set a time limit for completion.



## NEWS/EVENTS /UPDATES

News/Events/Updates the news and events section is great resource that is regularly updated with information that may be useful for students and teachers, such as examination dates and notifications



## SLIDER SECTION

Each slide can provide details about the event, registration information, etc. This allows prospective students to engage with the institution and gather more information.



## VIDEO WATCH HISTORY

Video watch history is a feature that tracks and records the videos that a user has watched. It serves several purposes, including helping users keep track of their viewing activity and allowing them to revisit or resume previously watched videos easily.



## ASK DOUBT MODULE / SUPPORT

The module often allows students to ask questions anonymously if they prefer. It may include a text box or connect through WhatsApp method. This can encourage students to freely ask questions without hesitation or fear of judgment. Once a student submits a doubt or question, the system may automatically assign the question to the relevant teacher based on the subject or topic.



## PROFILE & FAQ

Provide a section where users can enter and edit their personal information, such as their name, profile picture, contact details and some relevant details. FAQs are created to provide quick and easily accessible information to address common queries, concerns, or doubts that users may have about a particular topic.

# STANDARD LEVEL

(All Basic Level Features Included)



## PAYMENT GATEWAY

All of the app's payments are processed here. Students can buy the courses they need with ease.



## EXAMINATION MODULE

This module consists of objective MCQ type exams that are related to the subjects of the students respective classes.



## TESTIMONIAL SECTION

The testimonial section module collects and displays user feedback and reviews, showcasing positive experiences to build credibility and trust



## STORE MANAGEMENT

Streamline product publication and management effortlessly with our store management module, a powerful feature designed to enhance the overall experience for users in your institution or organization.



## FEE MANAGEMENT

The fee management module handles billing, payments and records, streamlining financial transactions, tracking fees and generating financial reports efficiently.



## THE ASSIGNMENT/TASK MODULE

Streamline the creation, management, and submission of assignments. It provides educators with a powerful tool to assign tasks, track progress, and evaluate student performance, while offering students a user-friendly interface to submit their work and receive feedback.



## COMPLETE ADMS SOLUTION

Our Admission Management System simplifies the enrollment process, providing administrators with efficient tools to manage applications and streamline admissions. With user-friendly interfaces and robust data management, it ensures a hassle-free experience for both institutions and prospective students.



## ATTENDANCE MANAGEMENT

The attendance of a student can be calculated and managed by looking at the login information, class attendance, watch history and exams taken.



## PLACEMENT OR JOB ENQUIRY SECTION

The students can access details about placements and their updates in this section



## CLASS-LEVEL SETTINGS

Empower your learning experience with personalized education through class-level settings on our app, tailoring content, assessments and interactions to meet the unique needs and progress of each class. Enhance collaboration, engagement and academic achievement by customizing the educational journey at the class level.



## STUDENT PERFORMANCE ANALYSIS

Teachers can evaluate student performance based on attendance and exam scores. This data can help teachers identify students who may be struggling and intervene accordingly.



## LIBRARY MODULE

The students can access the online books and PDF records in the library for reference.

## PREMIUM LEVEL

(All Basic & Standard Level Features Included)



### TEACHERS MANAGEMENT

Teachers can access our platform through a secure login, gaining access to a range of essential functions such as study material management, assignment uploads, and communication with students.



### INDIVIDUAL CHATTING OPTION

Our chat feature facilitates direct communication between students and teachers, fostering a supportive learning environment. It enables students to ask questions, seek guidance and engage in productive discussions with their educators, enhancing their educational journey.



### DESCRIPTIVE QUESTIONNAIRE

In the exam module you'll find both MQC type questions and also descriptive type questions.



### CLASS RATING OPTIONS

You can add class rating options for students in order to help improve the quality of education in the future.



### REFER AND EARN PROGRAM

If you refer our app to a friend and they sign up, you'll earn points that you can redeem for prizes.



### PUSH NOTIFICATION SYSTEM

Push notifications typically consist of a short text message, usually accompanied by a small icon or image. The content of the notification should be concise, relevant, and engaging to capture the user's attention. It may include information about new messages, updates, promotions, or reminders.



## COMPETITIVE EXAMS

In competitive exams, negative marking systems are in place to ensure fairness and balance amongst all participating students.



## UPLOAD AND DOWNLOAD QUESTION AND ANSWER

Our Question Paper Upload and Download feature streamlines access to assessment materials, allowing educators to upload papers with ease, and students to download them for efficient preparation, creating a seamless learning experience.



## WHATSAPP INTEGRATION

Explore seamless connectivity by integrating WhatsApp into our application, empowering users with efficient communication and collaboration for a more connected and interactive experience.



## TIMETABLE MODULE

The timetable module in our education app allows users to efficiently organize their academic schedules by creating, managing, and customizing class schedules and study sessions. Users can set reminders and receive notifications to stay on track with their coursework, ensuring a seamless and organized learning experience.



## FRANCHISE / BRANCH MANAGEMENT

The Franchise Management Module will help you to manage and oversee important business functions, such as sales, customer relationships and marketing.



## CERTIFICATE GENERATION

Celebrate your achievements with personalized certificates generated instantly on our platform. Recognize your hard work and accomplishments in our educational app with beautifully crafted certificates tailored just for you.



## AI CHATBOT

It makes use of Natural Language Processing (NLP) and Artificial Intelligence (AI) to streamline communication between administrators, teachers and students, automate responses and offer real-time support.

---



## CLASS SCHEDULE OPTIONS

An intelligent timetable management tool built within the LMS is the Class Schedule Module. From a single digital dashboard instructors and students may effectively plan, view and manage their class schedules, sessions and academic activities.

---



## PROGRESS REPORT

The module supports detailed tracking of student performance, making it easy to identify strengths and areas for improvement.

---



## LEADERBOARD SYSTEM

The Leaderboard System is designed to enhance student engagement and motivation through healthy competition and gamification. It displays a ranked list of learners based on their performance, participation and achievements within the learning platform

---



## HYBRID EXAMINATION MODULE

It is an advanced feature integrated into the LMS that enables institutions to conduct both online and offline examinations through a single unified platform. It simplifies the entire exam management process from question creation to evaluation while ensuring security, flexibility and real-time monitoring.

---



## SUPPORTING TICKET GENERATION

This integrated helpdesk tool within the LMS enables users to effectively track resolutions, report problems and request assistance. It ensures smooth communication between students, teachers and administrators while maintaining complete transparency in problem solving.

---

# ADVANCED LEVEL

(All Basic, Standard & Premium Level Features Included)



## OWN LIVE CLASS FACILITY

Own Live Class Facility We provide our own live class facility, so you don't need to use third-party apps like Google Meet or Zoom.



## AUTOMATIC RECORDING OPTION

Our Automatic Recording Option is a cutting-edge feature designed to seamlessly capture live events, meetings, lectures, or any real-time activities within your application.



## FILE SHARE

The file share module in our application enables users to securely upload, store and share files with others. It supports various formats, provides access controls, and ensures data privacy and collaboration.



## AUDIO BOOKS

Discover the Audio book feature in our app, allowing admin to upload content easily, while students enjoy flexible access for an enriched learning experience. With interactive communities and accessibility features, learning becomes more engaging and inclusive.



## COUPON CODE GENERATION

Optimize savings and enhance user engagement with our coupon code generation feature, allowing effortless creation and distribution of exclusive discounts, making every transaction within our application a rewarding experience.



## EDUCATION CLUB (student interactions)

The students who use the app can now interact with each other to form a meaningful community.



## PARENTS LOGIN

The purpose of a parent's login for an LMS is to give them instant access to their child's assignments, grades and other pertinent data. This platform lets parents stay involved in their child's education



## ID CARD GENERATION

ID Card Generation in a LMS refers to the ability of the platform to create and manage student, faculty and staff identification cards.



## INSTITUTION CALENDAR / TIME TABLE

An Institution Calendar for LMS is a centralized tool that provides a comprehensive view of important dates, events and deadlines for students, faculty and staff.



## TEACHER'S PERFORMANCE REPORT

A Teacher's Performance Report in an LMS provides a comprehensive, data-driven overview of how effectively an instructor is engaging, managing and improving learner outcomes. It consolidates key teaching metrics into one unified dashboard, enabling institutions to monitor quality, identify strengths and support continuous improvement.



## ONLINE ASSESSMENT SYSTEM

Witsclass provides an easy-to-use online assessment system with auto-graded quizzes, instant results and multiple question formats making evaluations faster, smarter, and more efficient for educators and learners.



## SALES TEAM ENQUIRY MANAGEMENT

Manage and track sales enquiries efficiently with Witsclass's organized sales team enquiry system.



## INDIVIDUAL AUTO CALLING OPTION

By generating significant voice calls, the LMS's Individual Auto Calling feature improves communication between educational institutions and students (or their parents). This feature enables the system to make customized voice calls to people in response to specified schedules or activities.

---



## E- SIGNING OPTION

E-Signing feature enables users to digitally sign papers, guaranteeing a safe and paperless workflow in educational establishments. This function is particularly helpful for signing academic or administrative documents such as faculty contracts, consent letters, fee receipts, student agreements and admission forms.

---



## SCRATCH AND EARN

This is a gamified reward system integrated within the LMS that motivates learners through interactive rewards and engagement-based incentives. It combines fun with functionality by allowing students to scratch virtual cards to earn coins, points or discounts based on their activities and achievements.

---



## PAYMENT COIN / WALLET SYSTEM

This is an innovative reward-based feature integrated into the LMS that encourages students to actively engage with the platform. Students earn coins for completing learning activities such as watching educational videos, attending live classes or completing quizzes. These earned coins are automatically added to their in-app wallet, which they can later use within the LMS platform.

---

# ENTERPRISE LEVEL



(All Basic, Standard, Advanced & Premium Level features Included)



## CRM SOLUTIONS

We can provide CRM solutions that will help manage all your company's relationships with both current and potential customers. By using our software, you'll be able to keep track of customer interactions, sales and more in one easy-to-use system.



## MULTI-LANGUAGE OPTIONS

Multi-language options in a LMS refer to the ability of the platform to support multiple languages, allowing users to access and interact with the system in their preferred language.



## MULTIPLE CURRENCY OPTIONS

Multiply currency options in a LMS refer to the ability of the platform to support various currencies for transactions, such as tuition fees, course fees.



## ERP INTEGRATION

We provide the capability to seamlessly integrate ERP systems based on your specific requirements, ensuring smooth data flow and streamlined operations. Our flexible approach allows you to customize your ERP integration optimizing your business



## BIOMETRIC INTEGRATION

The biometric integration module in our AR/VR SOLUTIONS application enhances security by incorporating fingerprint, facial recognition, or iris scanning for user authentication. This ensures only authorized individuals access the system, providing a seamless and secure user experience with high accuracy and reliability.



## AR/VR SOLUTIONS

Enhance learning with immersive AR/VR solutions from Witsclass for interactive, engaging educational experiences



## AI INTEGRATION

Our platform offers the flexibility to integrate AI tools as per your specific requirements, enhancing functionality and automation as needed. By accommodating custom AI integrations, we empower users to tailor their experience to suit their unique needs and preferences.



## CUSTOM MADE SOLUTIONS

All applications and systems will be tailored to customer needs every element can be adjusted to the client's required specifications and functions.



## ACCOUNTING / HR/PAYROLL

Our software can be used to manage accounting and HR for your company. We can also help determine the payroll for your employees.



## E-COMMERCE

It's a digital platform (web or mobile app) that enables businesses and customers to buy and sell products or services online. It includes features for product browsing, adding items to a cart, secure checkout, digital payments and order tracking for customers.



## GAMIFICATION

Our gamification module uses points, badges and leaderboards to boost engagement, motivate users and make learning fun and interactive.



## OTHER THIRD-PARTY INTEGRATIONS

Witsclass seamlessly integrates with leading third-party tools like Zoom, Google Meet, payment gateways, and email platforms to enhance learning, communication and administration ensuring a smoother, more efficient experience for educators and institutions.

# ■ ADDITIONAL SUPPORT ■ WITS CLASS ?



POSTER DESIGN



DIGITAL MARKETING  
SUPPORT



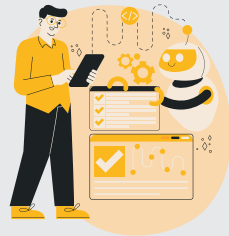
SEO SERVICE



VIDEO SHOOT &  
ASSISTANCE



STUDIO SUPPORT



AI CREATION  
SUPPORT



TELE / MARKETING  
SUPPORT



SOCIAL MEDIA  
MANAGEMENT

# ■ GLOBAL PRESENCE OF WITS CLASS ■




**ACROSS**  
**15+ COUNTRIES**

Celebrating **10**  
Years




 **CALICUT**

Govt. Cyber Park, Calicut





 **+91 9526 859 323**

 **COCHIN**


Kinfra Hi-Tech Park, Cochin

 **+91 9961 859 323**

 [www.witsclass.com](http://www.witsclass.com)  [sales@witsclass.com](mailto:sales@witsclass.com)

FOLLOW US ON    

 [www.welkinwitstech.com](http://www.welkinwitstech.com)

 [sales@welkinwitstech.com](mailto:sales@welkinwitstech.com)